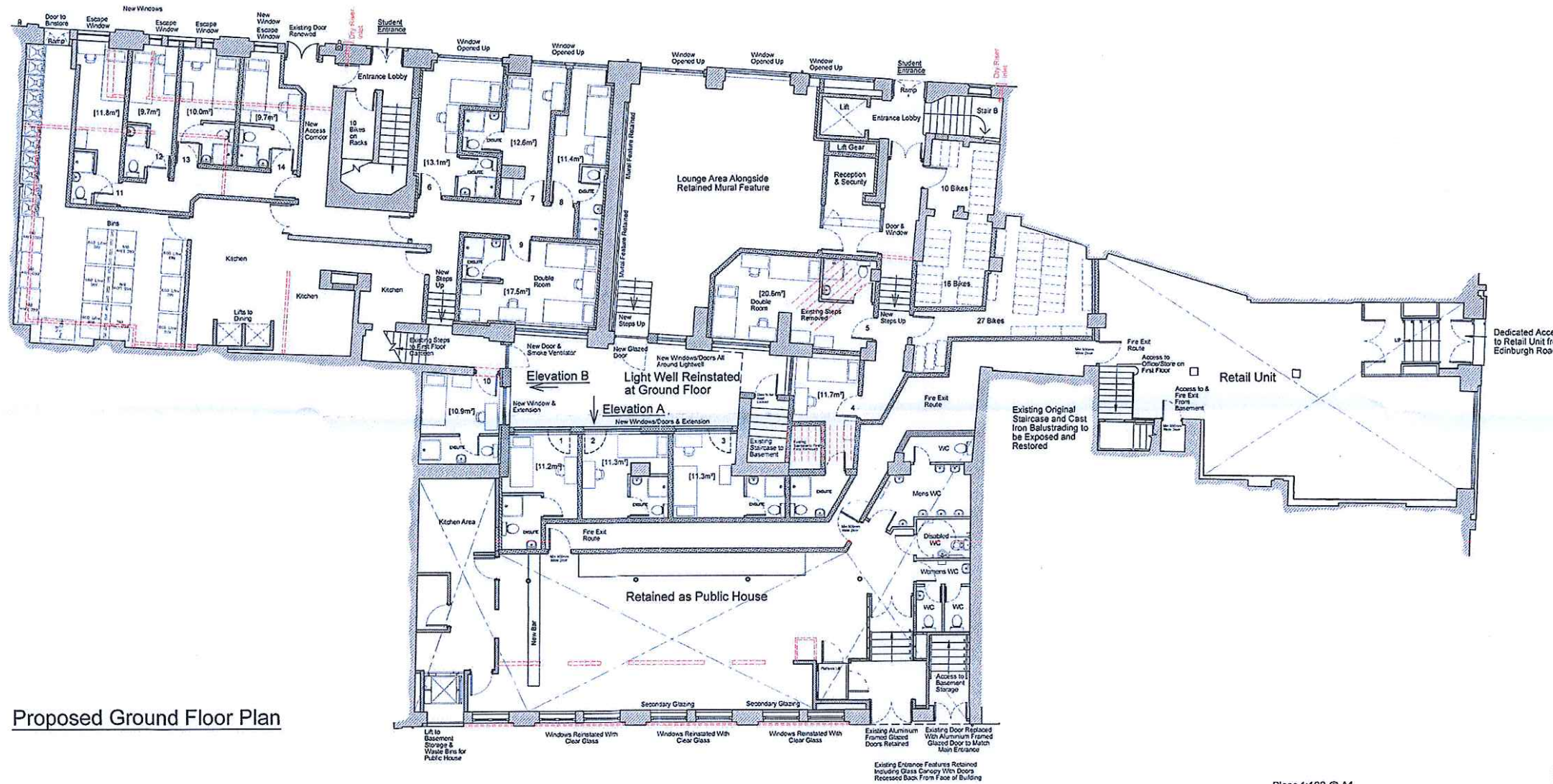


# Appendix B

Notes: © GI Contractors Ltd

1. This drawing is the exclusive property of GI Contractors Ltd and the reproduction of any part without prior written consent from this office is prohibited.
2. In no event shall GI Contractors Ltd be made liable to anyone for special collateral, incidental or consequential liabilities in connection with the use of this drawing or associated digital data.
3. Contractor to check and verify all levels, datums and discrepancies on site and shall report any discrepancies or omissions to this office prior to start of work and during the construction phase.
4. This office cannot be held responsible for dimensions and details of parts and equipment supplied by third party manufacturers. Such details to be verified by the contractor prior to commencement of work.
5. This drawing is to be read and understood in conjunction with structural, mechanical, electrical and/or any other consultant's documentation as may be applicable to the project prior to start of work and its duration.
6. Measurement scaling of this drawing shall only be performed in its digital form. Do not scale directly from the drawing.

| Revision | Detail                                 | By | Date     |
|----------|--|----|----------|
| A        | Preliminary Issue                      | AB | 15/09/16 |
| B        | Building Regulations                   | AB | 19/09/16 |
| C        | Revised to Latest Planning Application | AB | 12/01/17 |
| D        | Revised Following Comments Received    | AB | 03/02/17 |
| E        | Bar Toilets & Corridor Amended         | AB | 20/03/17 |



Proposed Ground Floor Plan

**Key:**

- Existing Masonry Construction to Remain
- New Masonry Construction
- Existing Masonry External Walls Lined with: 70mm metal stud with min 15mm clear space to masonry floor & ceiling tracks fitted onto resilient isolation strips 70mm thick 10 to 20 kg/m<sup>3</sup> mineral wool slabs between studs Lined with 1 x 12.5mm plasterboard
- Existing Masonry Internal Separating Walls Lined with where indicated: 50mm metal stud with min 10mm clear space to masonry floor & ceiling tracks fitted onto resilient isolation strips 45mm thick 45 kg/m<sup>3</sup> mineral wool slabs between studs Lined with 2 x 15mm 'soundbloc' plasterboard
- New Partitions:**
  - Separating Walls Constructed from: 2 x 50mm metal studs separated by min 15mm clear space Floor tracks fitted onto resilient isolation strips 40mm thick 45 kg/m<sup>3</sup> mineral wool slabs between studs Lined on each face with 2 x 15mm 'soundbloc' plasterboard
  - Partition Walls Constructed from: 70mm metal studs Floor tracks fitted onto resilient isolation strips 25mm thick 45 kg/m<sup>3</sup> mineral wool slabs between studs Lined on each face with 1 x 15mm 'soundbloc' plasterboard
  - 60 min Fire Compartment Partition Walls: 70mm metal studs Floor tracks fitted onto resilient isolation strips 45mm thick 45 kg/m<sup>3</sup> mineral wool slabs between studs Lined on each face with 2 x 15mm 'soundbloc' plasterboard
- Refuge Areas. Min 900mm x 1400mm for use by disabled persons in the event of escape from the building

**GI Contractors Limited**  
 St. Helen's Parade  
 Southsea  
 Hampshire PO4 0RN

Project: Fountain House  
 Location: Portsmouth  
 Drawing: GROUND FLOOR PLAN  
 Status: Building Regulations

Drawing Number: 121 Revision: E  
 Scale: 1:100 @ A1 Date: Sept 2016  
 Drawn By: AB

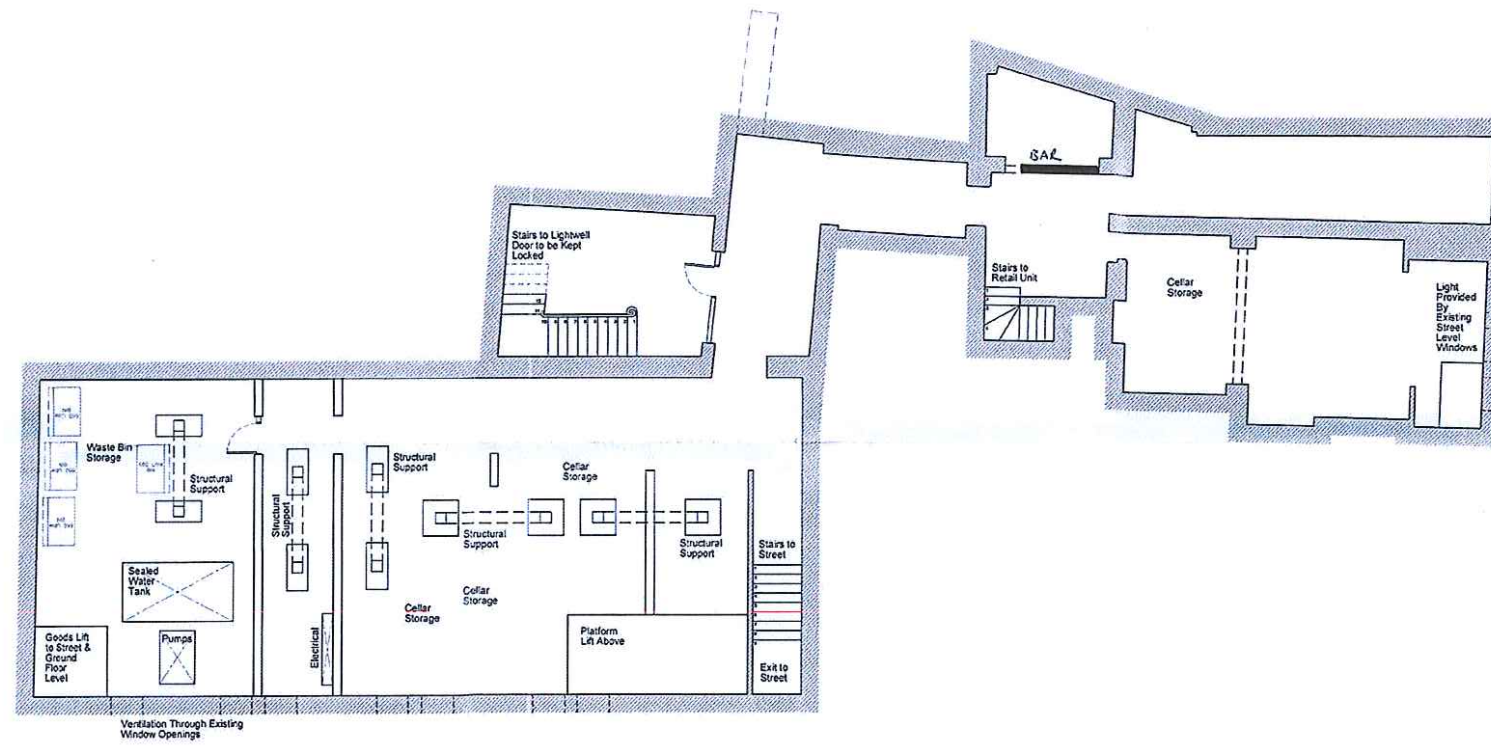


# Appendix B

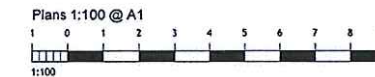
Notes: © GI Contractors Ltd

1. This drawing is the exclusive property of GI Contractors Ltd and the reproduction of any part without prior written consent from this office is prohibited.
2. In no event shall GI Contractors Ltd be made liable to anyone for special collateral, incidental or consequential liabilities in connection with the use of this drawing or associated digital data.
3. Contractor to check and verify all levels, datums and discrepancies on site and shall report any discrepancies or omissions to this office prior to start of work and during the construction phase.
4. This office cannot be held responsible for dimensions and details of parts and equipment supplied by third party manufacturers. Such details to be verified by the contractor prior to commencement of work.
5. This drawing is to be read and understood in conjunction with structural, mechanical, electrical and/or any other consultant's documentation as may be applicable to the project prior to start of work and its duration.
6. Measurement scaling of this drawing shall only be performed in its digital form. Do not scale directly from the drawing.

| Revision | Detail               | By | Date     |
|----------|----------------------|----|----------|
| A        | Planning Application | AB | 28/02/17 |



Proposed Basement Floor Plan



This Drawing Can Be Scaled For Planning Purposes

**GI Contractors Limited**  
 St. Helen's Parade  
 Southsea  
 Hampshire PO4 0RN

Project: Fountain House  
 Location: Portsmouth  
 Drawing: BASEMENT FLOOR PLAN  
 Status: Planning  
 Drawing Number: 126 Revision: A  
 Scale: 1:100 @ A1 Date: Sept 2016  
 Drawn By: AB



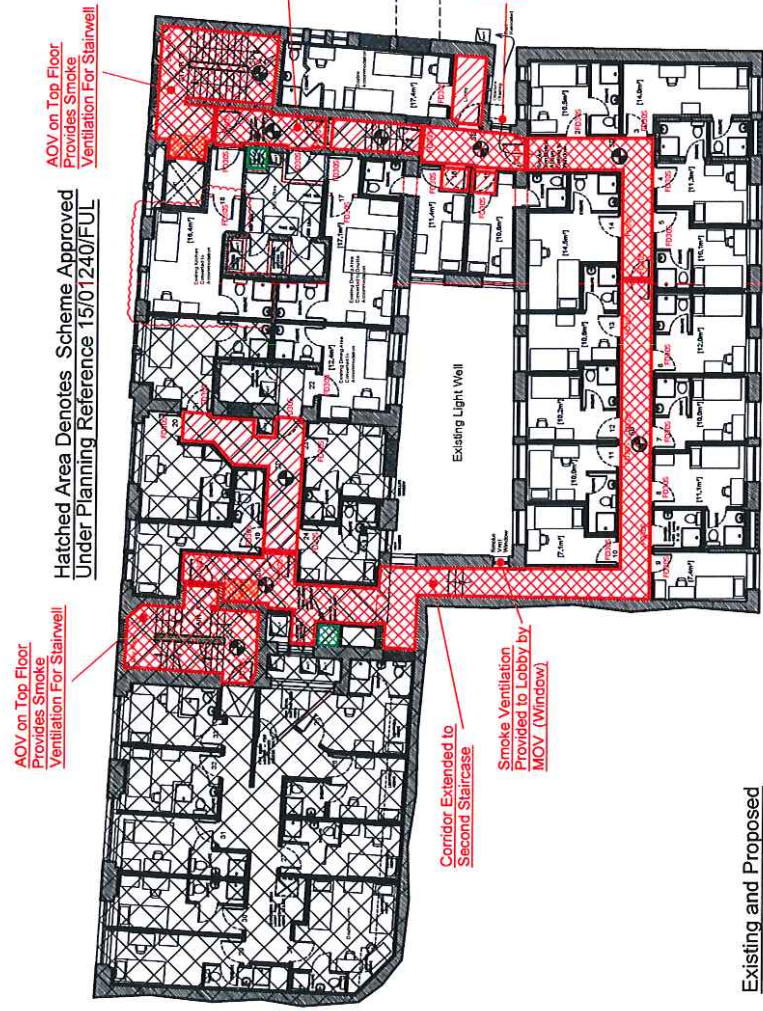
**Notes:**

1. This drawing is the exclusive property of GI Contractors Ltd and the reproduction of any part without prior written consent from this office is prohibited.
2. No part of this drawing shall be used for the purpose of providing special liability or consequential liabilities in connection with the use of this drawing after the date of issue.
3. Contractor to check and verify all measurements and discrepancies on site and shall report any discrepancies or omissions to this office prior to start of work and during the construction phase.
4. This office cannot be held responsible for dimensions and details of parts and equipment supplied by third party manufacturers. Such details to be verified by the contractor prior to commencement of work.
5. This drawing is to be read and understood in conjunction with structural, mechanical, electrical and/or any other consultants' documentation as may be applicable to the project prior to start of work and its duration.
6. Measurement scaling of this drawing shall only be performed in its digital form. Do not scale directly from the drawing.

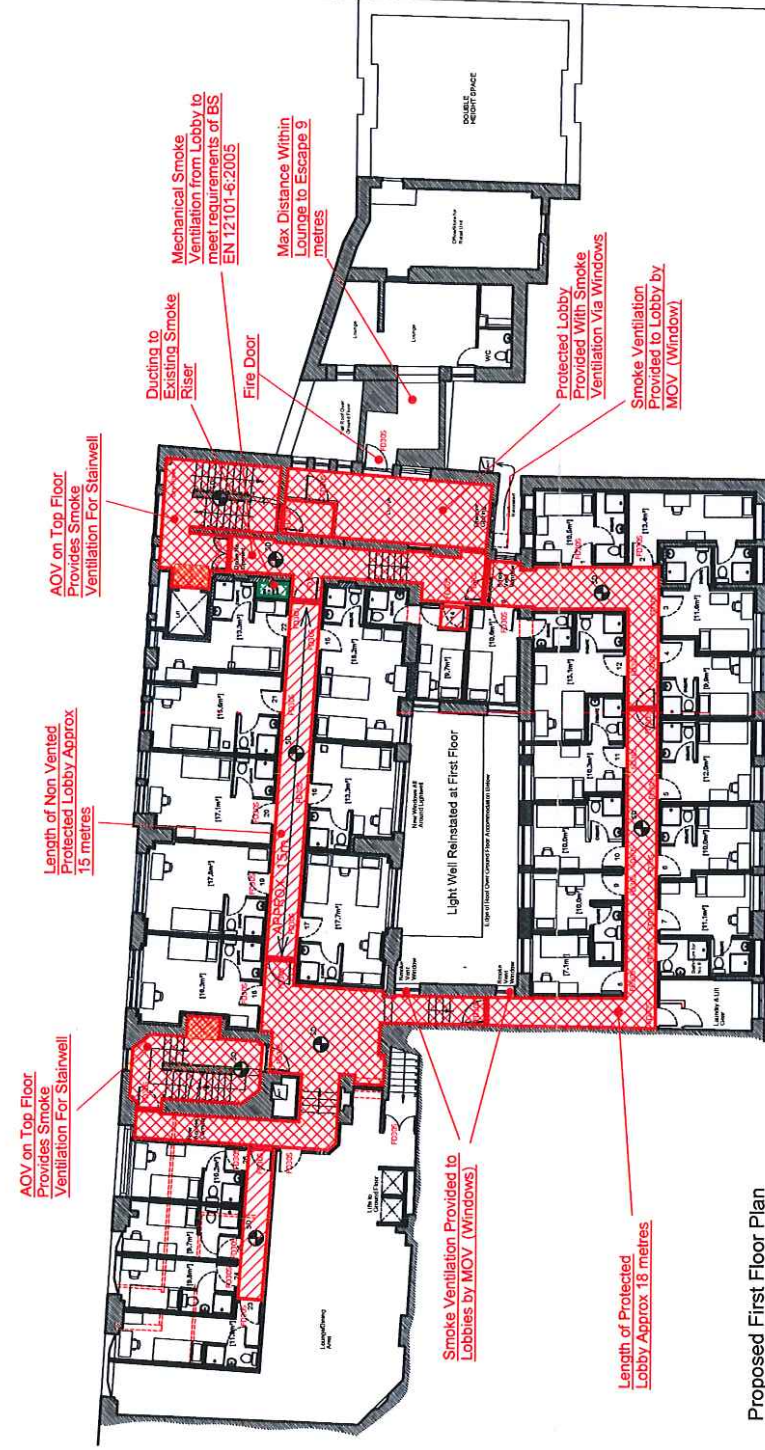
© GI Contractors Ltd

| Revision | Detail                                 | By | Date     |
|----------|--|----|----------|
| A        | Preliminary Issue                      | AB | 15/09/16 |
| B        | Building Regulations                   | AB | 16/09/16 |
| C        | Revised to Latest Planning Application | AB | 12/01/17 |
| D        | Scale Amended                          | AB | 28/01/17 |
| E        | Revised Following Comments Received    | AB | 03/02/17 |
| F        | Revised to Latest Proposed Layout      | AB | 20/03/17 |

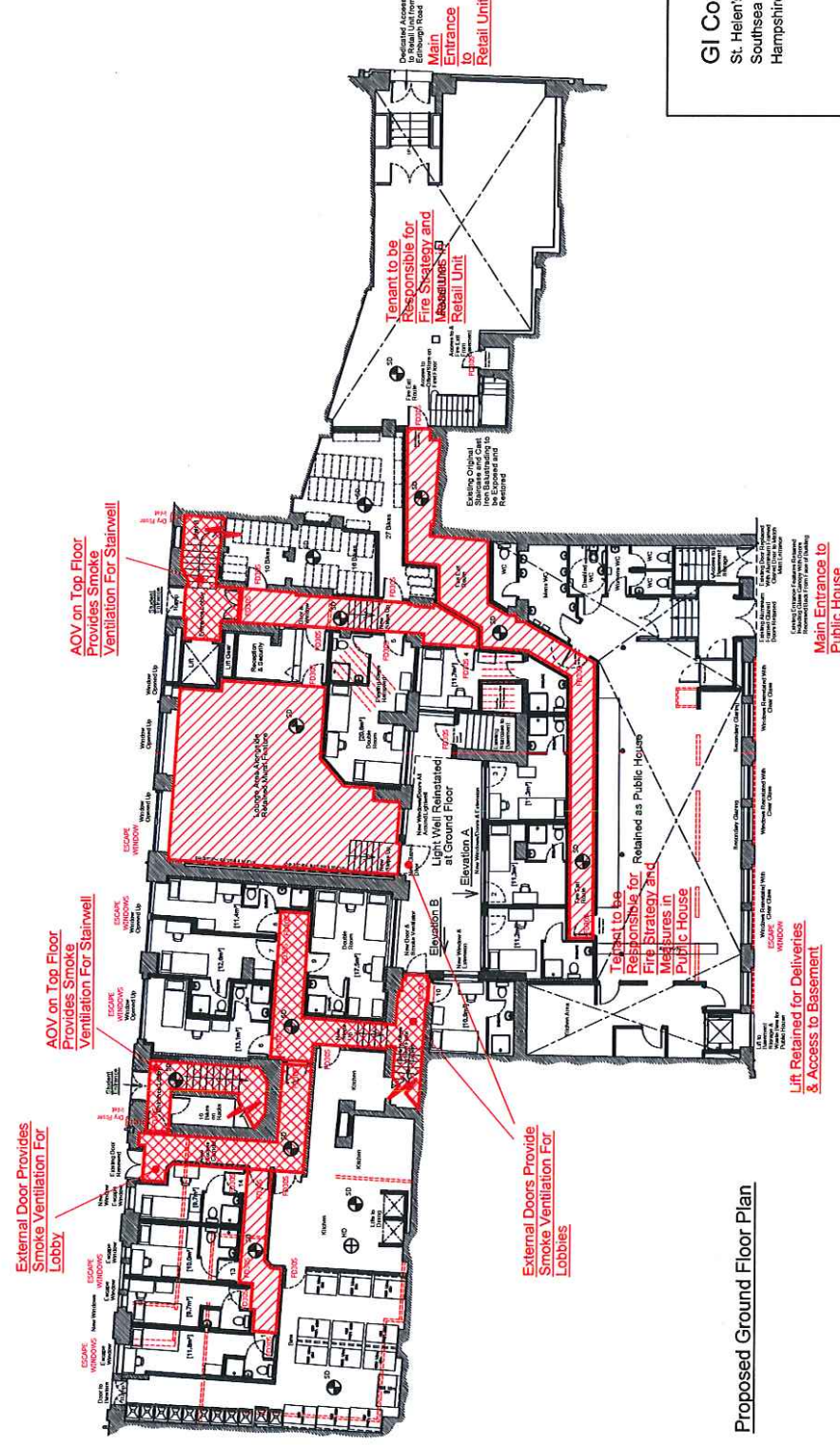
# Appendix B



Existing and Proposed Second Floor Plan



Proposed First Floor Plan



Proposed Ground Floor Plan

**KEY:**

- Protected Escape Route With 60 Minute Fire Protection
- Protected Escape Route with 60 Minute Fire Protection and Smoke Ventilation
- Doors Fire Rated to 30 Mins With Smoke Seal
- Glazing Fire Rated to 60 Mins
- Manual Opening Ventilator (Min Area 1m²)
- Smoke, Heat Detectors
- Refer To Details Drawings For Fire Protection, Services and Pipework Details
- Fire Detection to at least a BS 5839 Pt 6 2004, Fire Alarm System to at least BS 5839-1 Pt 2 2002
- Refuges Area Min 600mm x 1400mm
- 0.8m² Smoke Ventilation Shaft with Mechanical Extraction

**GI Contractors Limited**  
 St. Helen's Parade  
 Southsea  
 Hampshire PO4 0RN

Project: Fountain House  
 Location: Portsmouth  
 Drawing: FIRE STRATEGY PLANS  
 Status: Building Regulations  
 Drawing Number: 125  
 Scale: 1:150 @ A1  
 Drawn By: AB

Revision: F  
 Date: Sept 2016